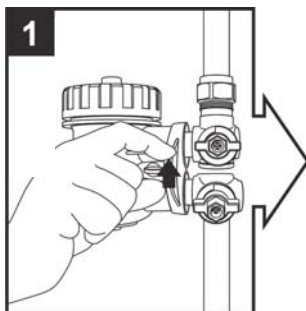
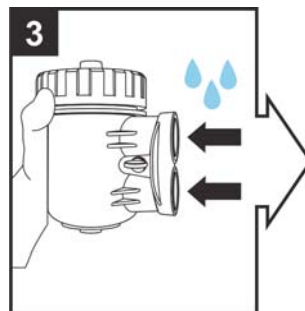
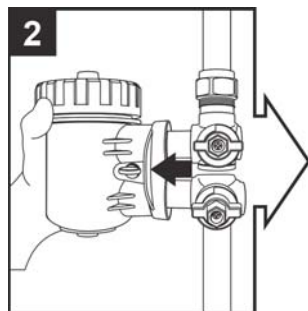


# System pro rychlé uchycení těla filtru

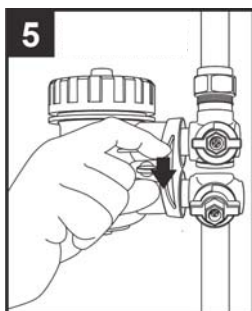
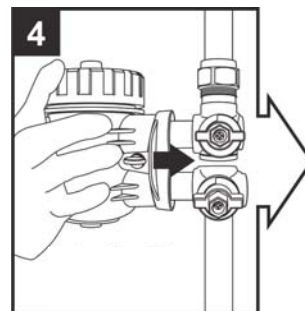
## MagnaClean Micro2



1  
odemkněte a vyjměte  
zajišťovací kolík



3  
vždy po demontáži těla filtru  
zvlhčete těsnění vodou



5  
zajišťovací kolík vraťte na  
místo a uzamkněte jej

**ADEY**  
PROFESSIONAL HEATING SOLUTIONS